

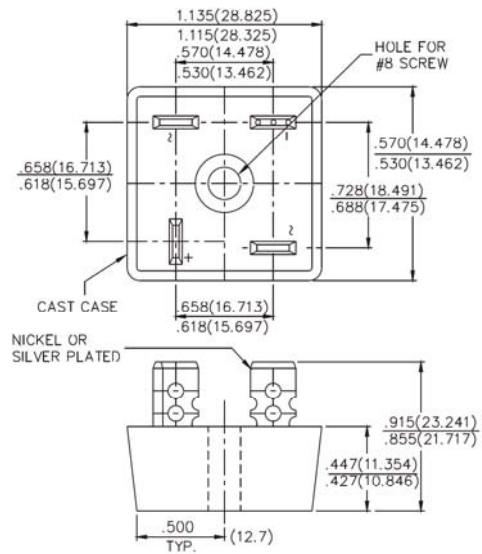
# SINGLE-PHASE SILICO BRIDGE

## KBPC15 SERIES 50 to 1000 V 15.0 A

### FEATURES

- Surge overload rating-300 amperes peak
- Low forward voltage drop
- Mounting Position: Any
- Electrically isolated base-1800 Volts
- Solderable .25" FASTON terminals
- Materials use carries U/L recognition
- UL recognized file #E76542(N)

### KBPC



Dimensions in inches and (millimeters)

### Maximum Ratings and Electrical Characteristics

Ratings at 25°C ambient temperature unless otherwise specified. Single phase , half wave, 60HZ, resistive or inductive load. For capacitive load, derate current by 20%.

		KBPC 15005	KBPC 1501	KBPC 1502	KBPC 1504	KBPC 1506	KBPC 1508	KBPC 1510	Units
Maximum Recurrent Peak Reverse Voltage	$V_{RRM}$	50	100	200	400	600	800	1000	Volts
Maximum RMS Voltage	$V_{RMS}$	35	70	140	280	420	560	700	Volts
Maximum DC Blocking Voltage	$V_{DC}$	50	100	200	400	600	800	1000	Volts
Maximum Average Forward output Current @ $T_C=55^\circ\text{C}$	$I_{(AV)}$	15.0							Amp
Peak Forward Surge Current, 8.3ms single half-sine-wave superimposed on rated load (JEDEC Method)	$I_{FSM}$	250							Amp
Maximum Forward Voltage at 7.5A DC	$V_F$	1.2							Volts
Maximum DC Reverse Current at rated @ $T_J=50^\circ\text{C}$ DC Blocking Voltage Per Element @ $T_J=100^\circ\text{C}$	$I_R$	10.0 1000.0							$\mu\text{Amp}$
$I^2t$ Rating for fusing ( $t<8.3\text{ms}$ )	$I^2t$	373.0							$\text{A}^2\text{S}$
Typical Thermal Resistance	$R_{\theta JC}$	2.5							$^\circ\text{C}/\text{W}$
Operating Temperature Range	$T_J$	-55 to +150							$^\circ\text{C}$
Storage Temperature Range	$T_{STG}$	-55 to +150							$^\circ\text{C}$

## RATINGS AND CHARACTERISTIC CURVES (KBPC15 SERIES)

Fig.1 - MAXIMUM FORWARD SURGE CURRENT

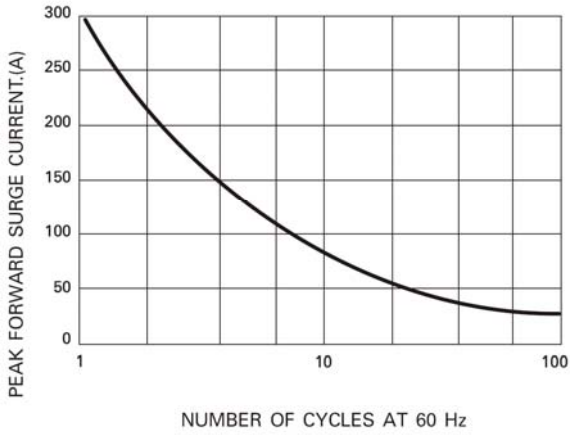


Fig.2 - DERATING CURVE FOR  
OUTPUT RECTIFIED CURRENT

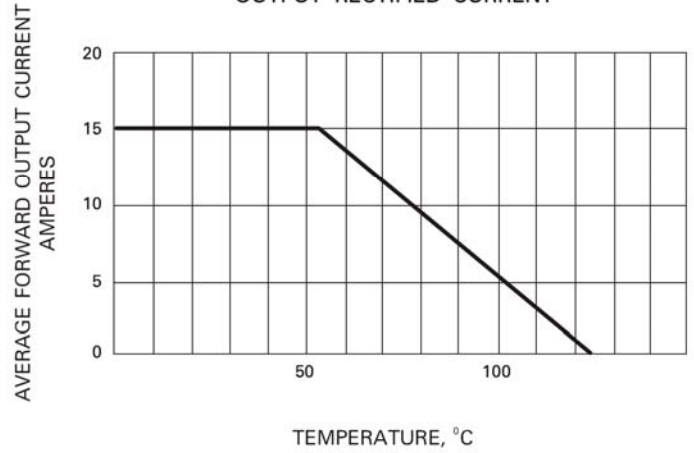


Fig.3 - TYPICAL FORWARD  
CHARACTERISTICS

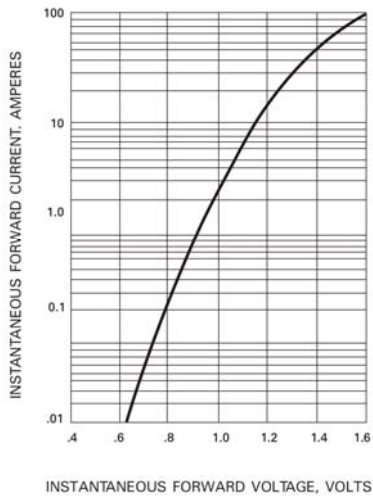


Fig.4 - TYPICAL REVERSE  
CHARACTERISTICS

