

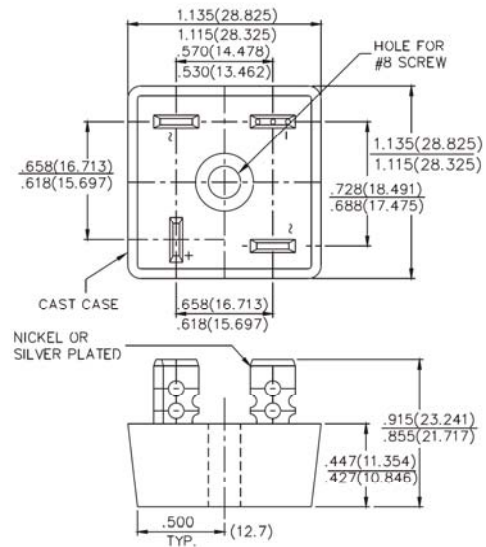
SINGLE-PHASE SILICO BRIDGE

KBPC25 SERIES 50 to 1000 V 25.0 A

FEATURES

- Surge overload rating-300 amperes peak
- Low forward voltage drop
- Mounting Position: Any
- Electrically isolated base-1800 Volts
- Solderable .25"FASTON terminals
- Materials use carries U/L recognition
- UL recognized file #E76542(N)

KBPC



Dimensions in inches and (millimeters)

Maximum Ratings and Electrical Characteristics

Ratings at 25°C ambient temperature unless otherwise specified. Single phase , half wave, 60HZ, resistive or inductive load. For capacitive load, derate current by 20%.

		KBPC 25005	KBPC 2501	KBPC 2502	KBPC 2504	KBPC 2506	KBPC 2508	KBPC 2510	Units
Maximum Recurrent Peak Reverse Voltage	V_{RRM}	50	100	200	400	600	800	1000	Volts
Maximum RMS Voltage	V_{RMS}	35	70	140	280	420	560	700	Volts
Maximum DC Blocking Voltage	V_{DC}	50	100	200	400	600	800	1000	Volts
Maximum Average Forward output Current @ $T_C = 55^\circ C$	$I_{(AV)}$	25.0							Amp
Peak Forward Surge Current, 8.3ms single half-sine-wave superimposed on rated load (JEDEC Method)	I_{FSM}	300							Amp
Maximum Forward Voltage at 12.5A DC	V_F	1.2							Volts
Maximum DC Reverse Current at rated @ $T_J = 25^\circ C$ DC Blocking Voltage Per Element @ $T_J = 100^\circ C$	I_R	10.0 1000.0							uAmp
I^2t Rating for fusing ($t < 8.3ms$)	I^2t	373							A ² S
Typical Thermal Resistance	$R_{\theta JC}$	2.5							°C/W
Operating Temperature Range	T_J	-55 to +125							°C
Storage Temperature Range	T_{STG}	-55 to +150							°C

RATINGS AND CHARACTERISTIC CURVES (KBPC25 SERIES)

Fig.1 - MAXIMUM FORWARD SURGE CURRENT

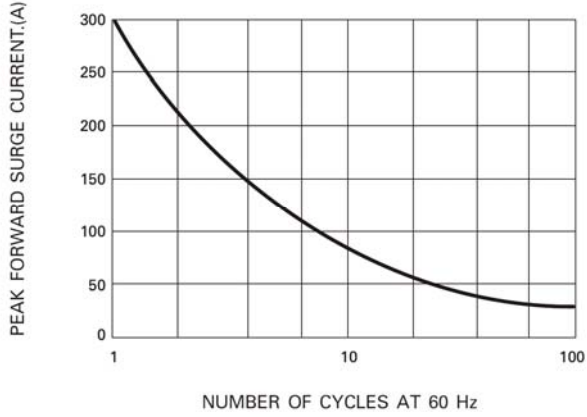


Fig.2 - DERATING CURVE FOR
OUTPUT RECTIFIED CURRENT

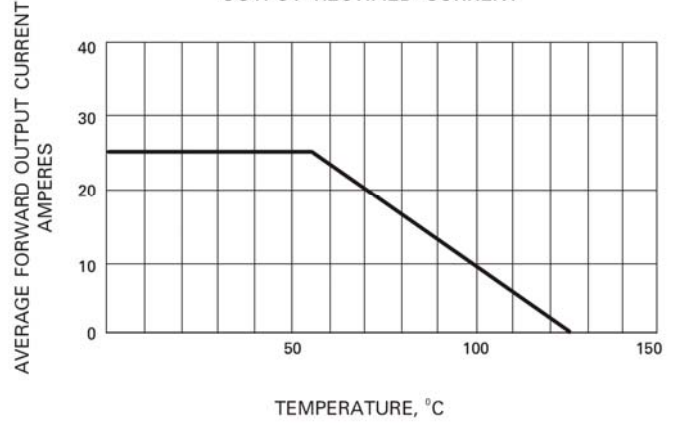


Fig.3 - TYPICAL FORWARD
CHARACTERISTICS

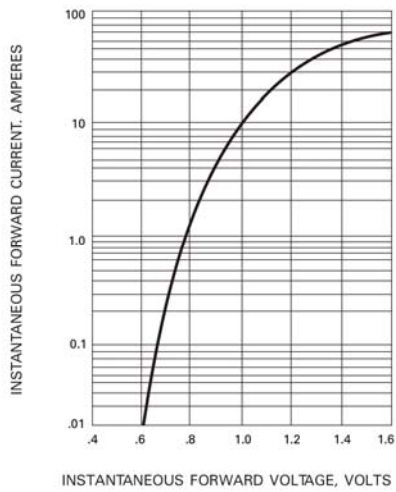


Fig.4 - TYPICAL REVERSE
CHARACTERISTICS

